

# Voting Now OPEN — Pick My Project

## Wonthaggi's Hidden Gem – Recreation and Ecosystems for the Future

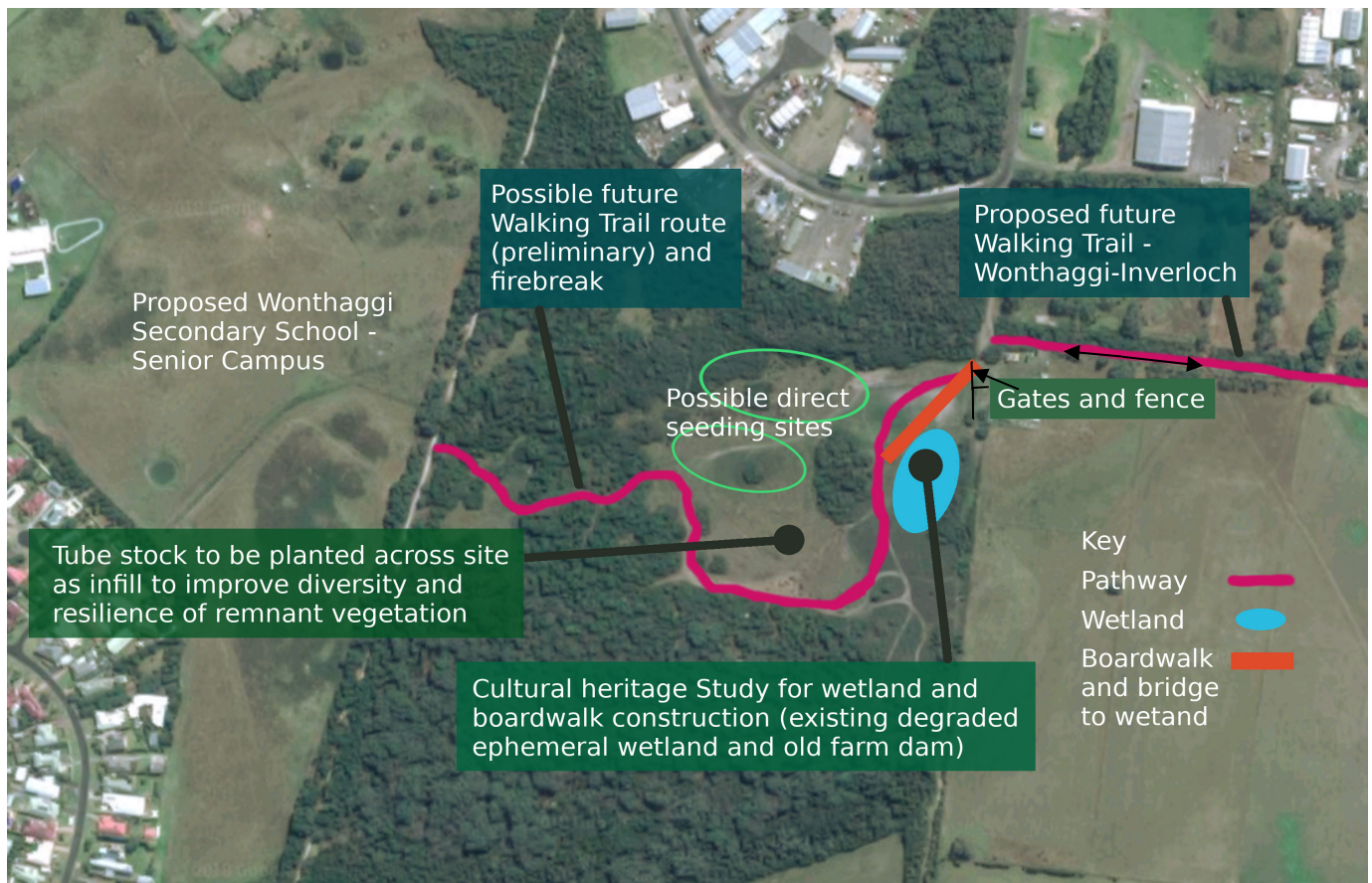
### A Community Project for Recreation and Restoring Habitat Resilience



[Pick My Project](#) is a Victorian State Government first community grants initiative, with \$30 million available to fund local projects of community benefit.

[South Gippsland Conservation Society Inc.](#) submitted a project for review which has been successful. Our project, along with many others, is now in the public domain for local community support and voting.

You can vote if you reside within a 50 km radius of the project site. We have requested funding of \$99,000 to implement the project as outlined below.



Located on Carneys Rd, *Wonthaggi's Hidden Gem* is public land, of approximately 11 Ha of significant remnant bushland, and some areas of degraded bush and land. It is surrounded on three sides by bushland managed by Parks Victoria. The restoration project would create numerous opportunities for the whole community – recreation, walking, bird watching and education, and would:

- ✓ Rehabilitate 11 hectares of remnant indigenous bushland with direct seeding and tube-stock.
- ✓ Undertake a cultural heritage study and restore a small ephemeral wetland.
- ✓ Construct a 60 metre boardwalk skirting crossing the wetland.
- ✓ Create linkages to the west with the popular rail trail and new secondary school.
- ✓ Long term planning will link the school, rail trail, a meandering trail to the new boardwalk and ultimately the proposed Wonthaggi to Inverloch walking path.

To Register and cast your vote go to: <https://pickmyproject.vic.gov.au/>

**Your vote and support is crucial for a successful outcome for this exciting project.**

More information on *Wonthaggi's Hidden Gem* can be found on the Pick My Project website or call Dave Sutton on Mob: 0419 230 110.

I look forward to your support and assistance.

Dave Sutton - [South Gippsland Conservation Society Inc.](#)